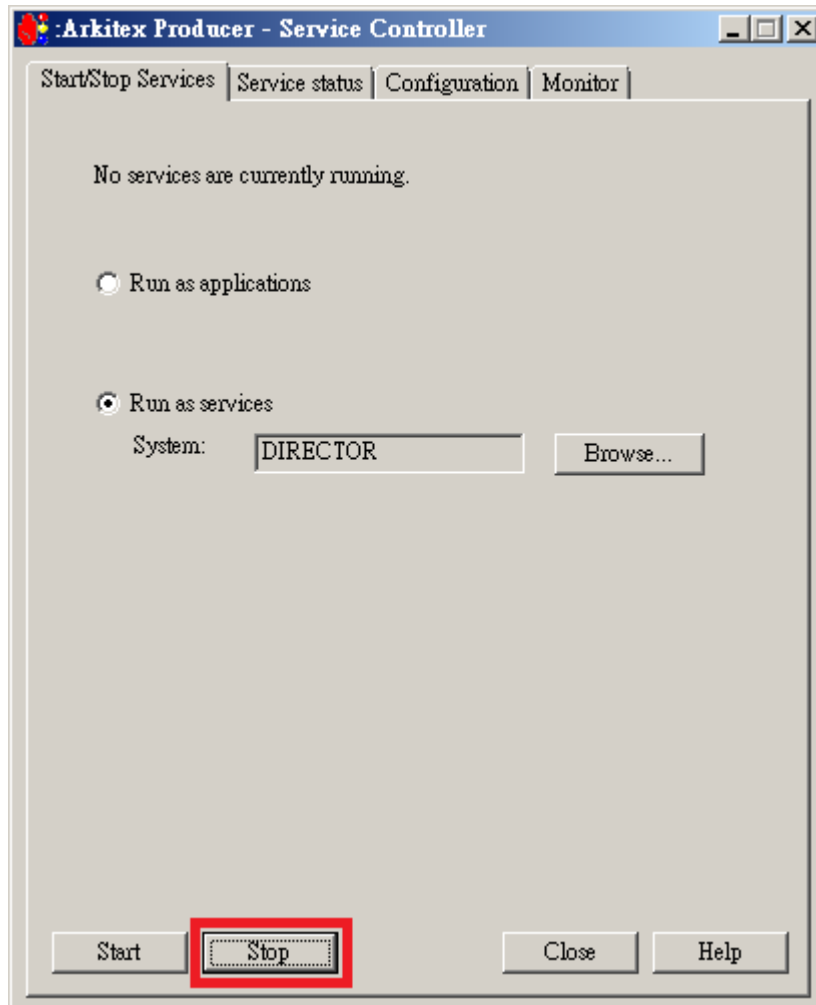
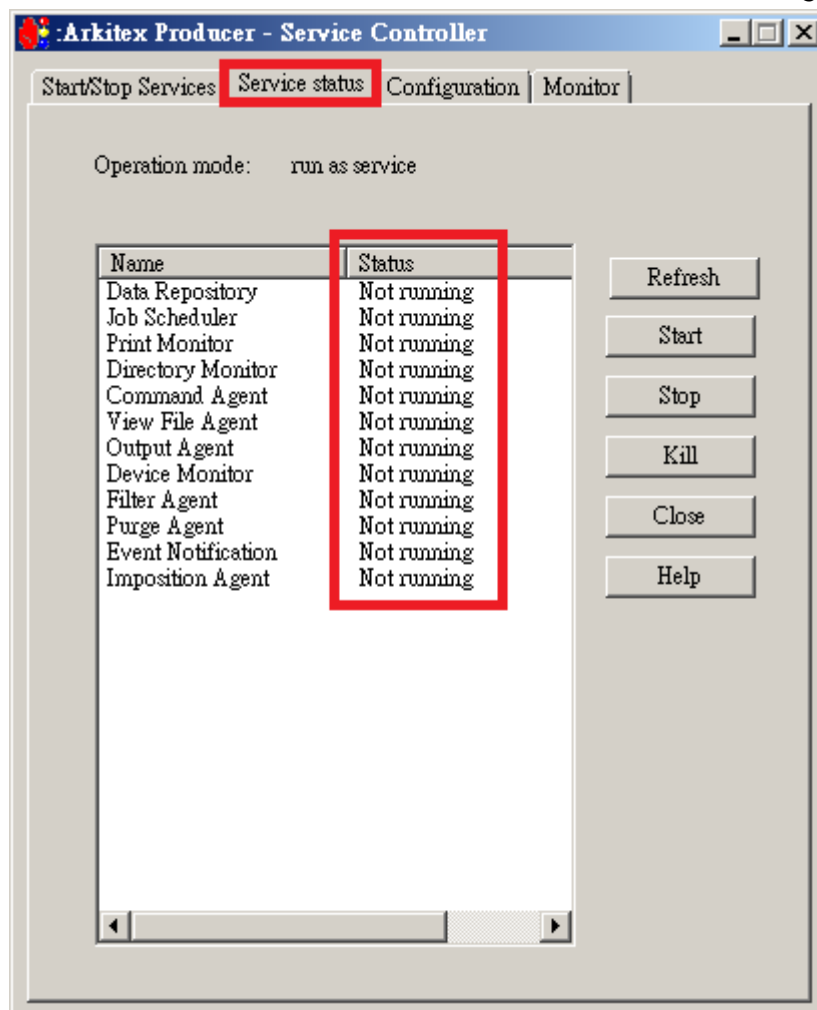


Initialize Producer Database 步驟

- A. 關閉所有 Activity Monitor 程式
- B. 執行 Director 伺服器上的 Producer Service Controller 服務(自本步驟含以下均在 Director 伺服器上執行)
- C. 按下「**Stop**」按鈕，停止所有 Producer 服務

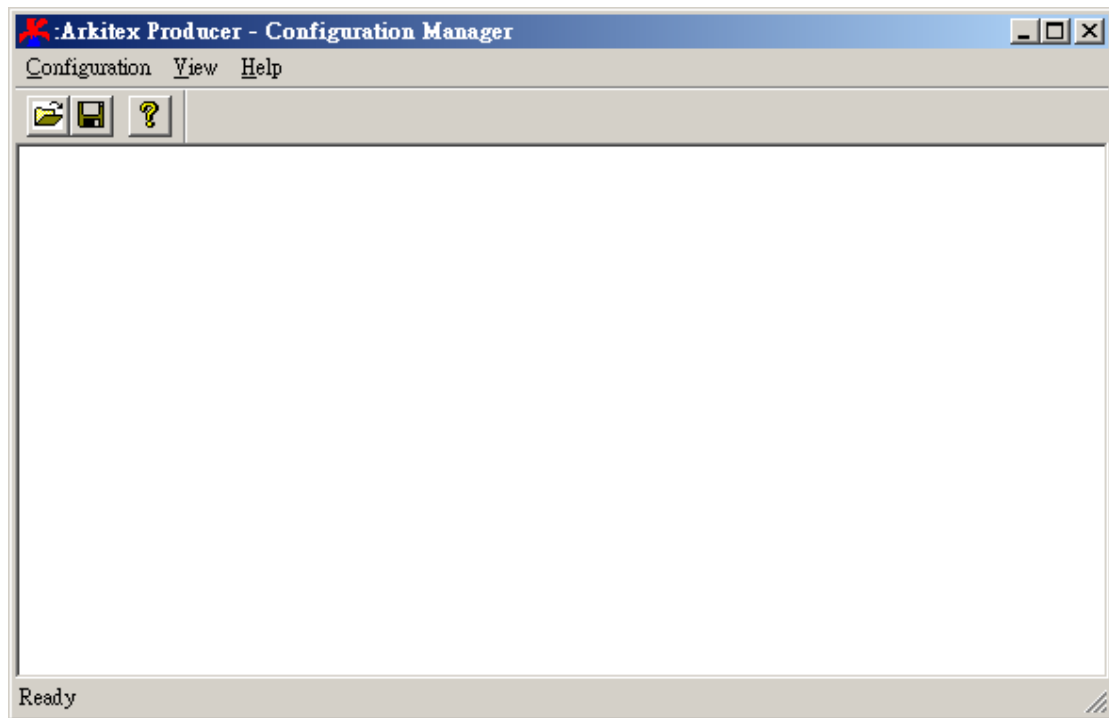


D. 選擇「Service status」，確認所有服務顯示 Not running

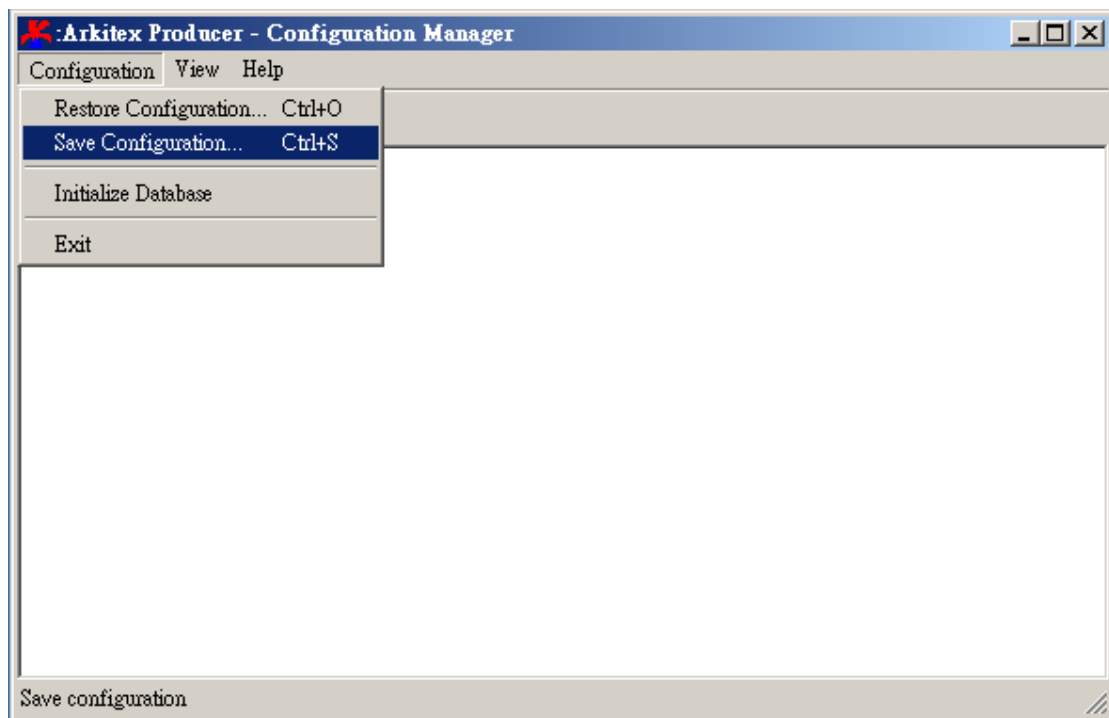


E. 關閉 Producer Service Controller

- F. 執行 **C:\Arkitex\Producer\bin\CfgMgr.exe** 程式，出現下圖:Arkitex Producer – Configuration Manager 視窗



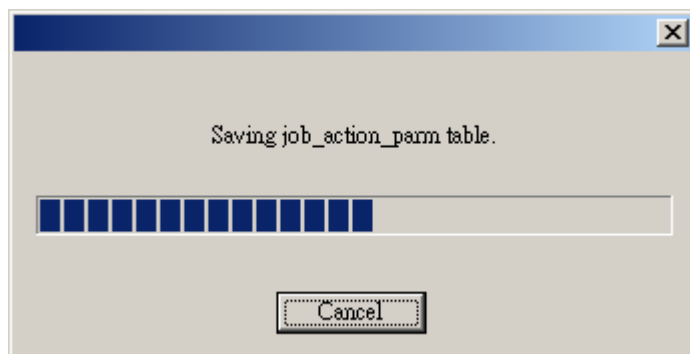
- G. 選擇 **Configuration → Save Configuration...**，先儲存 Producer 設定



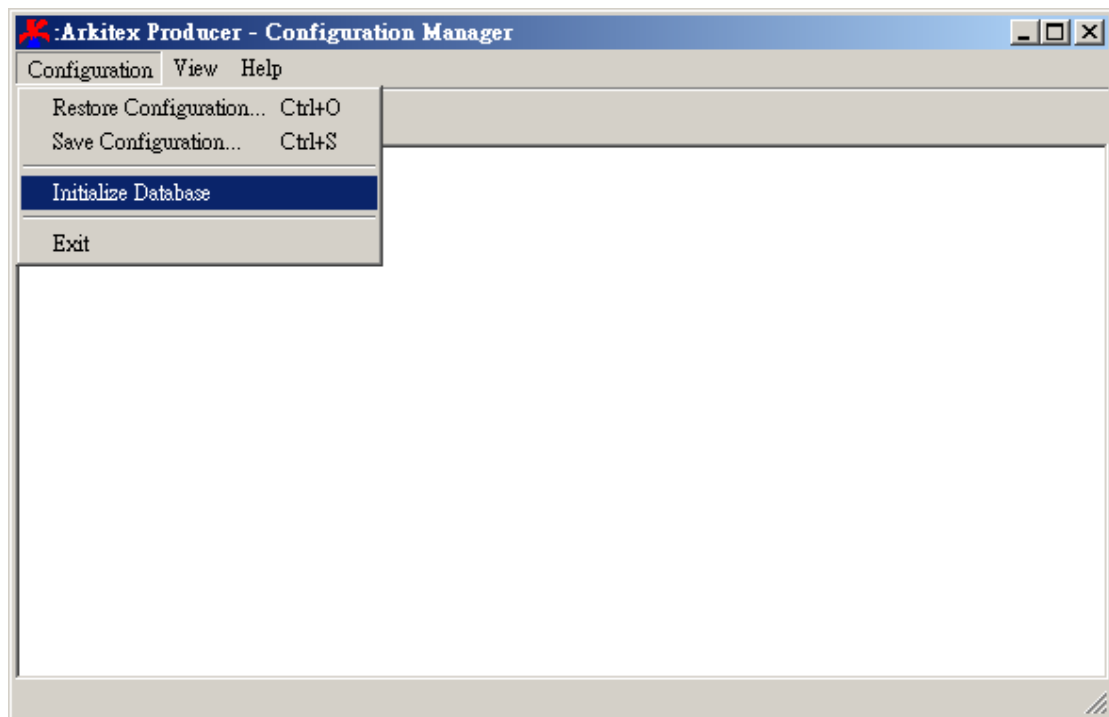
- H. 系統匯自動帶到 C:\Arkitex\Producer\Backup 路徑，並賦予當時系統日期與時間戳記的檔名，請勿變更儲存路徑與檔案名稱，直接按下「存檔」按鈕



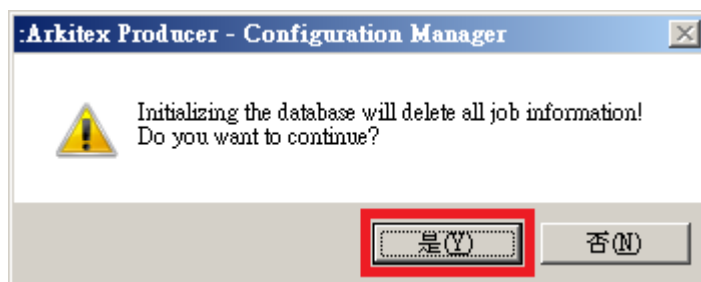
- I. 等待狀態列完成



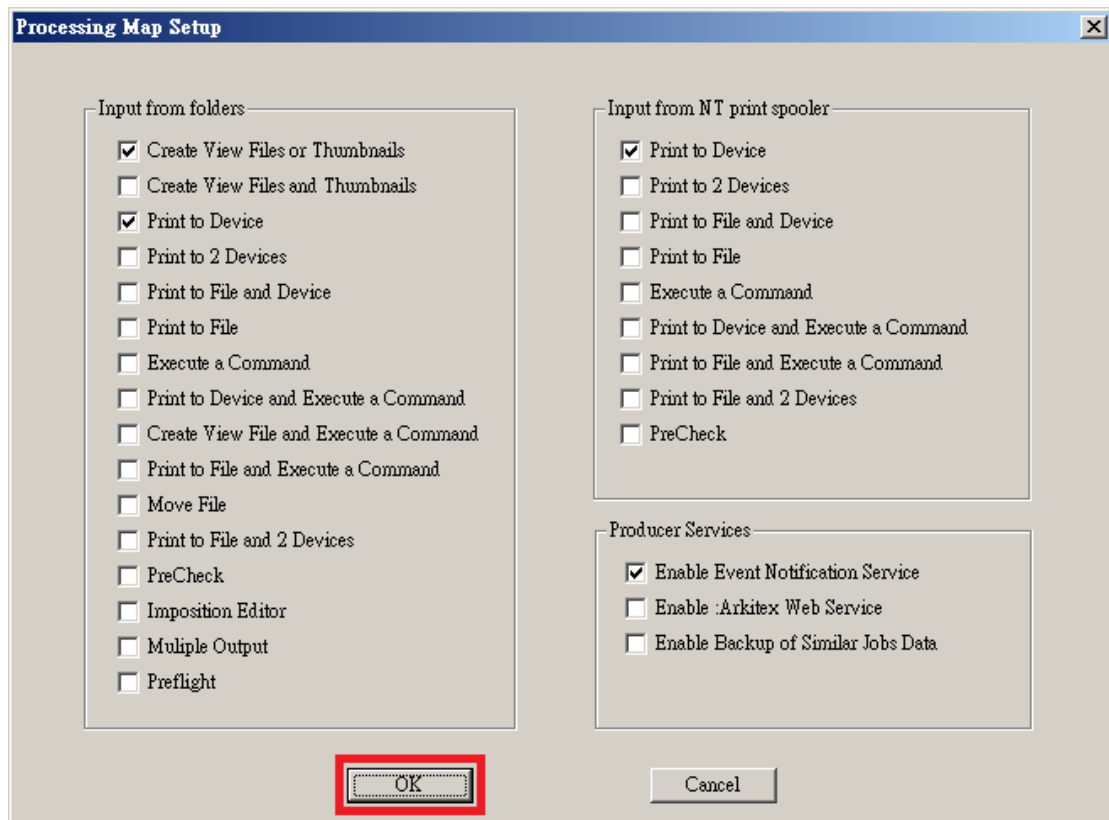
J. 選擇 **Configuration** → **Initialize Database**，初始化 Producer Database



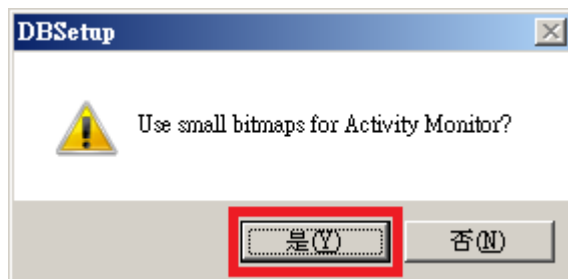
K. 出現下方詢問是否繼續執行 Initialize Database，請按下「是(Y)」按鈕



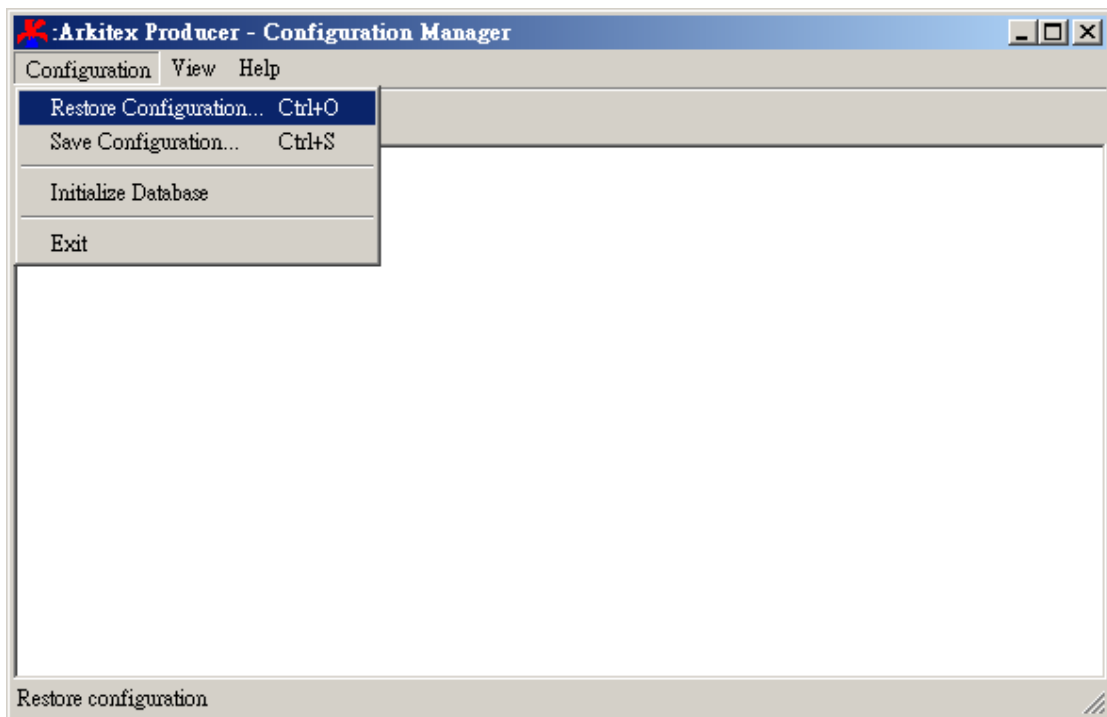
L. 出現下方視窗，此時不需理會這些選項，直接按下「OK」按鈕



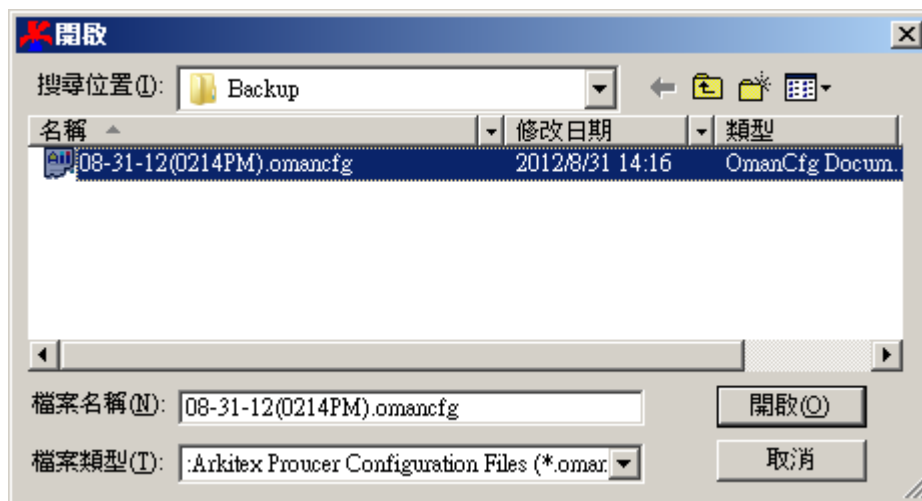
M. 出現如下對話框，詢問是否在 Activity Monitor 中使用小型點陣影像，請按下「是(Y)」按鈕



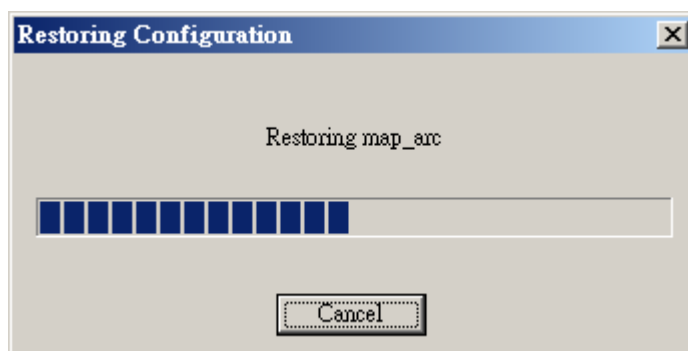
N. 選擇 **Configuration** → **Restore Configuration...**，回復 Producer 設定



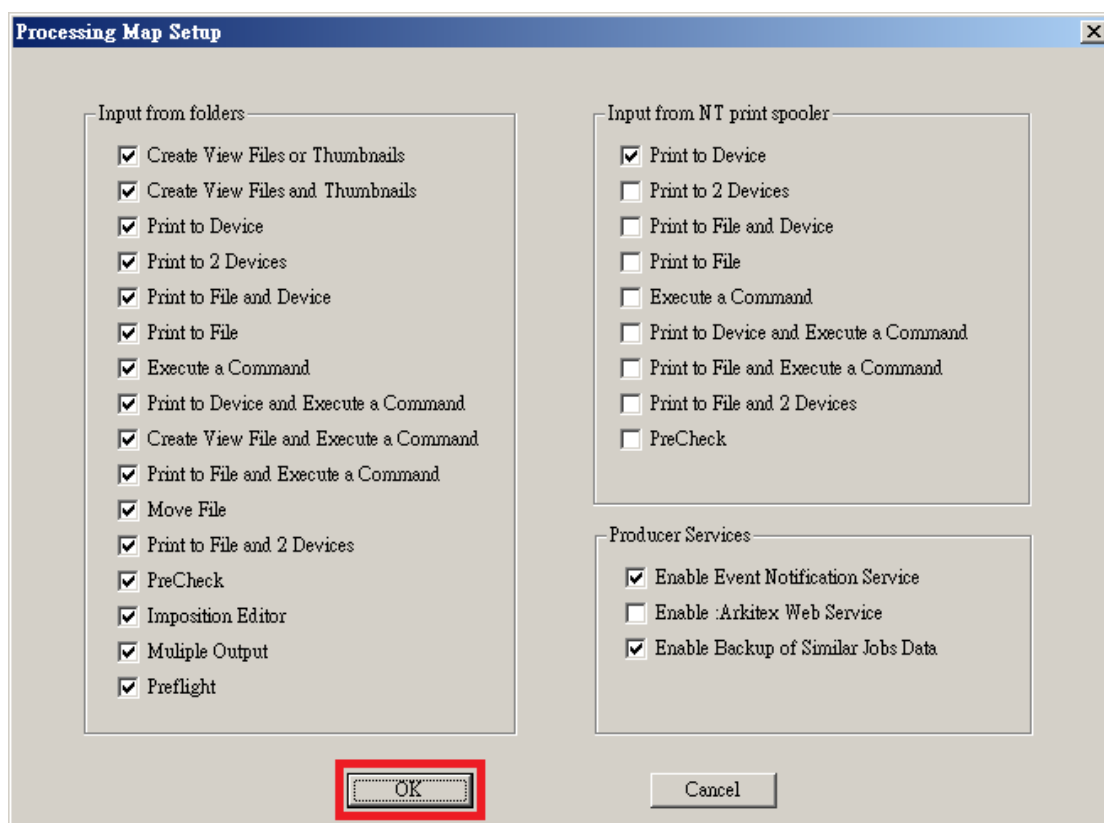
O. 選擇先前存檔的 Producer 設定檔案後，再按下「開啟(O)」按鈕



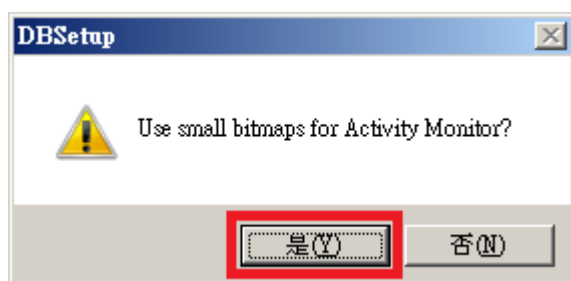
P. 等待處理狀態列完成



Q. 再度出現下方視窗，同樣的不需理會這些選項，直接按下「OK」按鈕



R. 再度詢問是否使用小型點陣影像，請按下「是(Y)」按鈕



S. 關閉:Arkitex Producer – Configuration Manager 視窗，完成 Initialize Producer Database 所有步驟